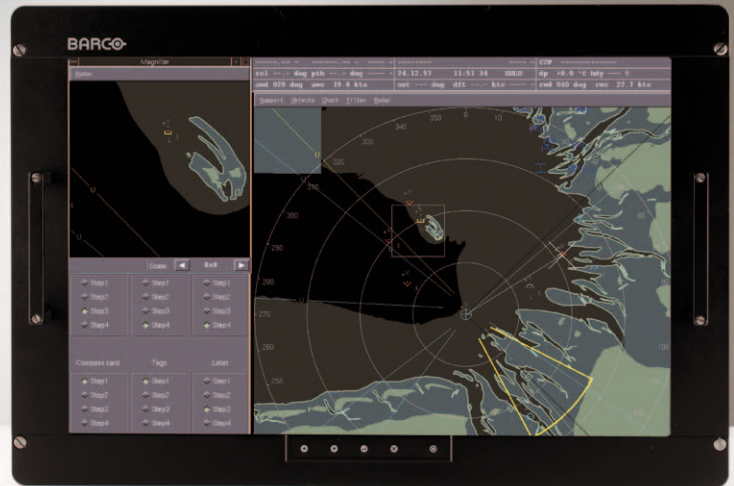


AL-361

24-inch airborne mission display



AL-361 at a glance

- 24-inch wide-screen LCD display
- 1920 x 1200 resolution
- RTCA/DO-160F certified
- Optical touch screen interface (option)
- Easy integration (thin design)

The Barco AL-361 is a 24-inch airborne display, specifically developed for use aboard mission aircraft and helicopters. The display's unmatched thinness makes it an ideal, RTCA/DO-160F qualified visualization solution for use in airborne applications where space is critical.

Excellent visual performance

The Barco AL-361 features a sunlight-readable 24-inch Active Matrix Liquid Crystal Display offering excellent performance in terms of brightness, crispness, contrast and viewing angle. Thanks to its outstanding optical performance, the AL-361 can be deployed for the most diverse mission applications, including daylight video cameras, moving maps, computer and radar. Furthermore, the AL-361 offers 8-bit native video processing, which makes it ideally suited for FLIR applications.

User-friendly touch-screen interface

The display's optional touch screen interface enables fast and easy interaction with the displayed content, without compromising on image quality.

BARCO

Visibly yours

Technical specifications

ELECTRO-OPTICAL	
Panel size	24 inch
Resolution	1920 x 1200 (WUXGA)
Brightness	Typical 300 cd/m ² (87.5 ftL)
Contrast ratio (in dark environment)	500:1
POWER	
Power supply	28 VDC
Guidelines	MIL-STD-704E
Power consumption	AL-361: 120 W
ENVIRONMENTAL	
Compliance	RTCA/DO-160F
Shock	DO-160F - 20G
Operational temperature (continuous)	Low temp: -40°C High temp: +55°C
Storage temperature	Low temp: -40°C High temp: +70°C
Relative humidity	max. 95% @ 40°C
IP rating	IP65 on unit level with optional military interface box
Drip-proof	Cat W
Operating altitude low pressure	40,000 ft (187 mbar)
Operating rapid decompression	8,000 ft (752 mbar) to 40,000 ft (187 mbar)
EMI/EMC	DO-160F
CONNECTIONS	
Signal inputs	DVI-I, VGA
RS-232 serial port	9 pin sub D
Power	9W4 sub D
CONTROLS & INDICATORS	
Controls	UP / DOWN / SEL / QUIT / STANDBY - In conjunction with OSD
Indicators	Green 'Power' LED, Red 'Fault' LED
OSD	On-Screen Display
GENERAL DATA	
Dimensions	419 mm X 624 mm X 69 mm (16.5" X 24.6" X 2.72")
Weight	13.8 kg (30.4 lbs)
Finishing	Black RAL 9005
MTTR	Less than 30 minutes
ADDITIONAL FEATURES	
Scaling modes	No scaling/full screen/keep aspect AutoSet, Automatic Phase Adjust (APA), Automatic Gain Control (AGC)
OPTIONS	
	Touch screen

Barco
 Pres. Kennedypark 35 - B-8500 Kortrijk, Belgium
 Phone: +32 56 233 045 - Fax: +32 56 233 588
 E-mail: sales.aerospace@barco.com

Barco, Inc.
 3059 Premiere Parkway, Duluth, GA 30097
 Phone: +1 678 475 8000 - Fax: +1 678 475 8007
 Email: avionics.sales_US@barco.com

M00319-R00-0210-DS
 Technical specifications are subject to change without prior notice