

Display maintenance software

Main features

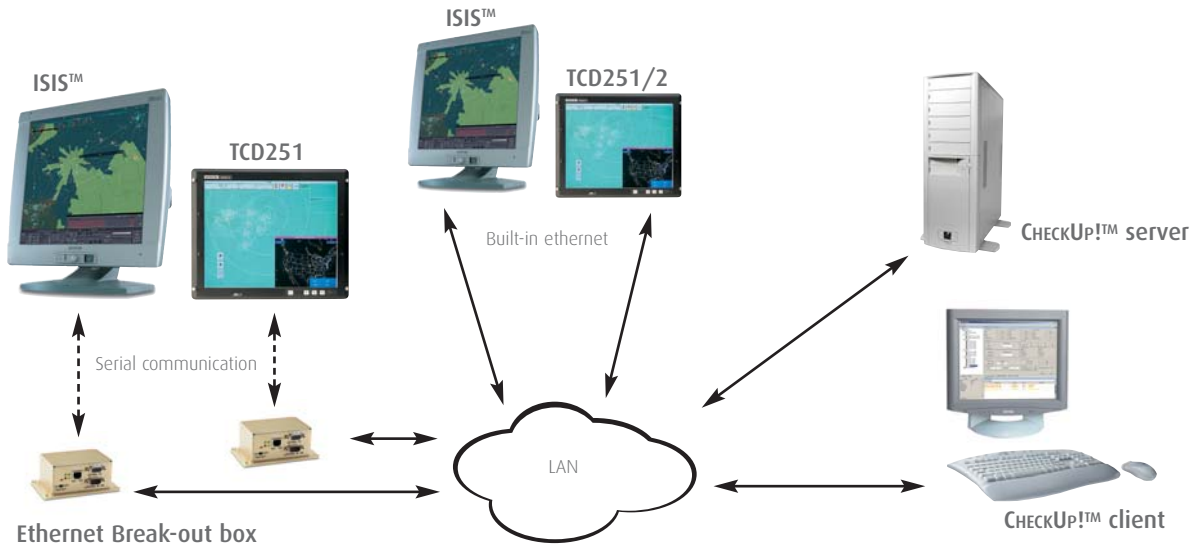
- Controls and monitors your complete display park simultaneously
- Instant reporting of system warnings/errors and customized notification
- Organizes preventive maintenance
- Lifetime and status monitoring of connected devices without disturbing operators
- Multiple CheckUp!™ clients can connect to a CheckUp!™ server
- Support for Windows & Unix platforms

Barco's CheckUp!™ software manages the operation and maintenance of a network of ISIS™ displays from one central location. Via a serial or TCP-IP interface, system administrators have access to all parameters, whether the ISIS™ displays are installed in local or remote locations. CheckUp!™ constantly polls the registered displays for their online status and warns system administrators for preventive maintenance actions (e.g. backlight or fan replacement) and display failures (e.g. video input signal loss, electronic problems).

The user-friendly software package supports multiple maintenance levels with individual privileges (e.g. supervisor, technical support...). Multiple views with various sorting options are available, including a hierarchical tree view of all locations and displays and a list of all connected displays.

CHECKUP!™ architecture

CHECKUP!™ consists of a server, a database and one or more clients. These can all be located on the same machine or distributed over the network. The CHECKUP!™ server API allows third party clients to interface to the server.



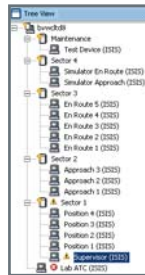
EBOB

The Ethernet Break-out Box allows displays without built-in Ethernet connection to be connected to the LAN via a Barco serial interface. EBOB features a hardware switch disabling the active control of the display.



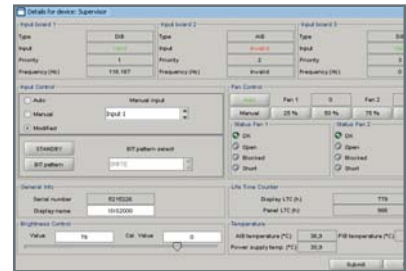
Structured overview

The hierarchical tree view of the entire installation gives an instant overview of the health status of all connected displays.



Detailed status view

The detailed parameter overview gives a real time status or history of the selected device. From this data (preventive) maintenance tasks are generated.



BarcoView

Pres. Kennedypark 35 - B-8500 Kortrijk, Belgium
 Phone: +32 56 233 935 - Fax: +32 56 233 462
 E-mail: sales.airtraffic@barco.com

Barco Orthogon AG

Hastedter Osterdeich 222 - 28207 Bremen, Germany
 Phone: +49-421-20 12 20 - Fax: +49-421-20 12 29 99
 E-mail: info.orthogon@barco.com

BarcoView, LLC

3059 Premiere Parkway - Duluth, Georgia, 30097-4905, USA
 Phone: +1 678 475 8000 - Fax: +1 678 475 8100
 E-mail: sales.barcoview-a@barco.com

Ref. ATC 04-003- September '04

Technical specifications are subject to change without prior notice

