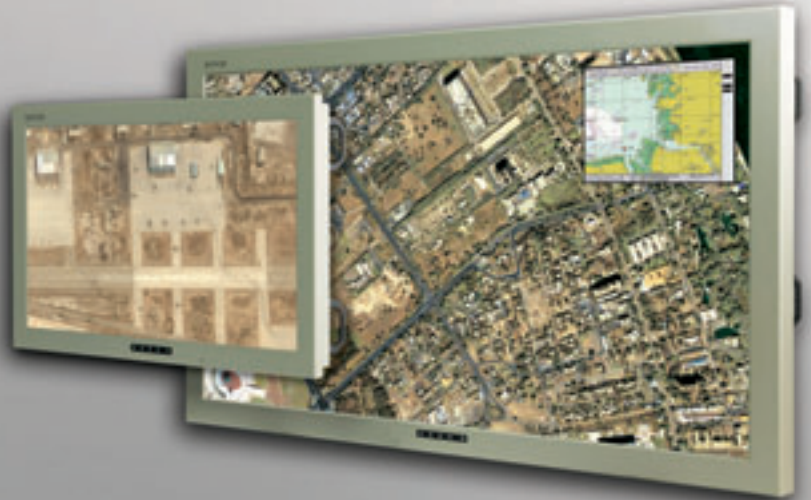


HD-40 & HD-65

Rugged large displays for collaborative visualization



Barco's 40" and 65" rugged displays are an ideal solution for collaborative review and decision-making in Combat Information Centers, bridges and other shipboard locations. The large-screen displays are network-capable and feature integrated computing modules to display any and all data, including video over IP. Barco's HD displays can be mounted on any shipboard bulkhead location and will accept analog, digital and internet protocol signals.

The native HD resolution (1920 x 1080 pixels) delivers bright and crisp graphics and video. In addition, with the fast response time (< 16 ms), HD displays reproduce fast-moving images with vivid accuracy. Finally, the HD's wide viewing angle (178°) offers optimum viewing comfort when multiple viewers are involved.

A naval display par excellence

Barco's HD displays are fully 901D grade B qualified, so they easily withstand the harsh shock, vibration and temperature conditions that are typical of naval environments. The displays can be dimmed to extremely low light levels, previously only achievable with CRT technology, which make them perfect for operation in low ambient light conditions, typically found on ship bridges during nighttime. The optional processor module brings the streaming video capability over Fiber or Copper Ethernet to the HD Displays, guaranteeing efficient information distribution over the entire ship.

Barco's 40" and 65" large-screen displays have already been selected by the US Navy, where they will be used for collaborative decision-making inside the Combat Information Center rooms, ship bridges and other spaces.

BARCO

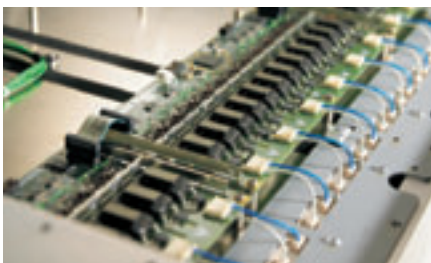
Visibly yours

Technical specifications HD-40 & HD-65

Electro-optical	HD-40	HD-65
Panel size	40"	64.5"
Resolution	1920x1080 (full HD)	1920x1080 (full HD)
Brightness	Typical 400 cd/m ² (116 fL)	Typical 200 cd/m ² (58 fL)
Contrast ratio (in dark environment)	2000:1	1000:1
Dimming ratio	minimum 100:1 (from daylight readability to night conditions)	

Environmental	
Vibration	Ships: MIL-STD-167-1, Type 1
Shock	- MIL-STD-810E Meth. 516.4 30g - 12.5ms half sine - MIL-STD-901D, Lightweight Grade B
Operational temperature (continuous) MIL-STD-810E	Low temp: 0°C High temp: +50°C
Storage temperature MIL-STD-810E	Low temp: -40°C High temp: +70°C
Relative humidity MIL-STD-810E	Max. 95% @ 40°C
Operating altitude Low pressure MIL-STD-810E	15,000 ft
EMI/EMC	MIL-STD-461 F (Surface navy applications)
FCC	FCC-A

Connections	
Signal inputs	DVI-I, VGA (type DVI-I, integrated DVI)
RS-232 serial port	9 PIN sub D
Power	MS 27656 T 09 F 98P (MIL-C-39999 series I)
Controls & indicators	
Controls	UP / DOWN / SEL / QUIT / STANDBY In conjunction with OSD
Indicators	Green 'Power' LED, Red 'Fault' LED
OSD	On-Screen Display
Power	
Power supply	115-220V AC
Guidelines	MIL-STD-1399 compliant section 300A
Power consumption	200W (typical) 320W (typical)
Safety	IEC 950
General data	
Weight	33.6 kg (74 lbs) 66.8 kg (147 lbs)
Finishing	Bezel color is No 26307 (FED-STD-595) (Navy gray)
MTR	Less than 30 minutes
Additional features	
Scaling modes	No scaling / full screen / keep aspect AutoSet, Automatic Phase Adjust (APA), Automatic Gain Control (AGC)
Options	
	Video over IP via fiber or copper Ethernet



Thanks to the integrated backlight inverters, the HD displays can be dimmed to extremely low light levels. This makes them perfect for operation in low ambient light conditions, typically found on ship bridges during nighttime.

Ref. no. R000000PB1008R000

Barco is an ISO 9001 registered company. The information and data given are typical for the equipment described. However any individual item is subject to change without any notice. The latest version of this product sheet can be found on www.barco.com

Contact Barco
 Europe, Middle-East, Africa: +32 56 26 20 09
 USA: +1 678 475 8000
 Latin America: +55 11 38421656
 Japan: +81 3 5762 8727
 China: +86 400 88 22726
 Or mail to sales.defense@barco.com

BARCO

Visibly yours