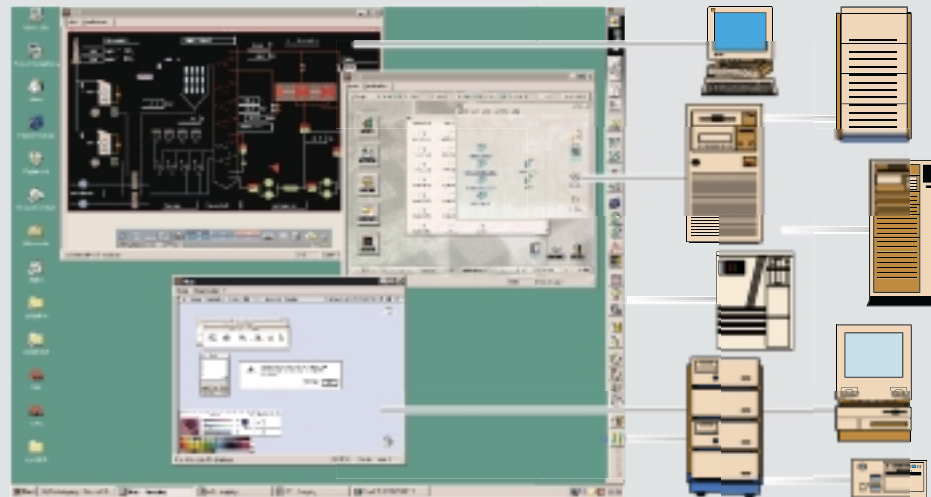


RGB Input Card



Extension card for Eos controlware

The RGB INPUT CARD digitizes analog RGB monitor signals and adapts them to the digital concept of OVERVIEW and ATLAS.

It enables the integration of systems which do not yet have open data interfaces and "digital" connections.

The RGB INPUT CARD can be used with the graphical control unit Eos both operating as Windows NT/2000 Workstation and X-Terminal[®].

Displaying monitor signals

The RGB INPUT CARD displays monitor signals up to resolutions of 1280x1024 pixels in windows which are freely scalable and moveable on the display wall.

Additional control monitor

The RGB INPUT CARD has two VGA compatible 15-pin SubMiniD connectors. RGB In is connected to the Eos, whereas RGB Out can be connected to an additional monitor which will receive the looped through signal.

No loss of view or control

The RGB INPUT CARD has two VGA compatible 15-pin SubMiniD connectors. RGB In is connected to the Eos, whereas RGB Out can be connected to an additional monitor which will receive the looped through signal.

Technical specifications RGB Input Card

RGB input

- Pixel frequency: 20 MHz to 140 MHz
- Line frequency: 15 kHz to 130 kHz
- Hsync + Vsync, Csync, Sync on Green
e.g. 1280x1024 pixels (SXGA) at
75 fps

Output

- 64K / 16.7 Million of colors*
- Scalable up to 2200x1650 pixels
- Display of RGB sources on entire
cubes or in freely moveable windows
across adjacent cube
- Refresh rate dynamically adjusted,
slow motion of animated objects
possible
- Data source and PCI bandwidth (QoS)
may have impact on the quality of
SXGA data representation

Interfaces

- VGA in:
15-pin SubMinD HD connector
- VGA out:
15-pin SubMinD HD connector

Presets

- Most common VESA-Timings
- User defined timings can be saved as
additional presets*

Additional Features

- Autodetection of input signal timing
and aspect ratio
- Autocalibration of colors*
- Available for Windows NT/2000 and
X.11

* depending on current technology

**together with 8 bit applications FULLCOLOR CARD required

Ref. no. R599645 November '03

Barco Control Rooms is an ISO 9001 registered company.
The information and data given are typical for the equipment described. However any individual item is subject to change without any notice.
The latest version of this product sheet can be found on www.barcocontrolrooms.com

Barco Control Rooms - Belgium
Noordlaan 5, 8520 Kuurne
Phone (32) (56) 368211
E-mail sales.bcd@barco.com

Germany Phone (49) (721) 62010
USA Phone (1) (770) 2183200
Brazil Phone (55) (11) 38421656
Japan Phone (81) (3) 57628720
Hong Kong Phone (852) 23970752

BARCO

Visibly yours