

XVS-2

Barco's eXtreme Visualization Software



Key benefits

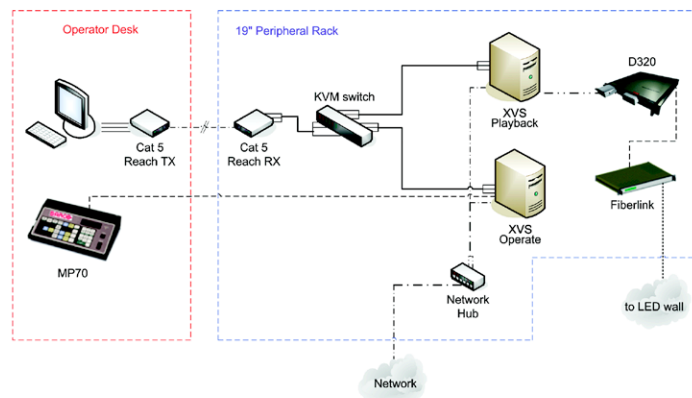
- Control multiple LED displays from one central PC through a LAN or WAN network. The same animation or commercial can be displayed on multiple LED boards.
- Professional WYSIWYG environment to mix graphics, live data and text in a single content item. Custom content can be saved and loaded (e.g. a soccer scoreboard).
- Configurable and intuitive live interaction tool with user-defined thumbnail buttons.
- RAID-5 redundancy for a safe in-game operation
- Barco D320 presets control for full flexibility and display control
- Specifically designed to drive LED sports perimeter and fascia.

A turnkey solution to control multiple LED displays from one operator station

To control large LED-based displays in sports venues, or when branding your company's new headquarters, Barco offers a tailor-made solution - encompassing hardware and software - to answer your specific needs.

XVS-2 visualization software

XVS-2 is Barco's primary software to control visual content on your LED video displays. With XVS-2, commercials, logos, real-time and scoring information, animations and other content can be organized into the system and displayed by a simple click of a button. It is also optimized for rapid response to live sports events by providing real-time content management and includes content scheduling and creation of both text and graphics. XVS-2 makes driving LED fascia and sports perimeter systems a breeze, as no stretching, mirroring or tiling of content is necessary. Animations will travel the full arena perimeter without duplication or interruption.



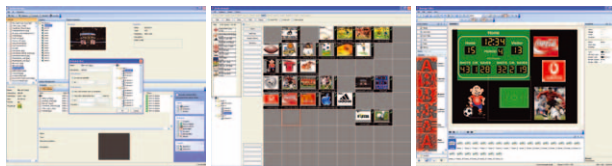
BARCO

Visibly yours

Feature list

User interface

- Windows-style application with menus, icons, pull-down menus, and mouse and keyboard operations
- Three main control tools are offered:



System manager

Action manager

Message editor

Output

- Animation display rate of at least 60 frames a second
- Ability to insert graphics and text over animation
- Ability to display live alphanumeric data feeds

Interconnectivity

- Ability to control multiple signs (max 10) and multiple sign sizes from one central controller through a LAN or WAN network

Quick operations

- User-defined thumbnail buttons which can be assigned to a single action or a series of cascading actions
- Quickly display the current content you are creating/editing on a sign (<1/3 second time delay)
- Grouping of files for quick display
- Grouping of "zones" for identical display on one sign (i.e. content sent once to a single zone can play simultaneously in multiple zones on a single sign)

Content import and supported formats

- Compatible with industry standard content formats
- Video: avi, mpeg-1,2,4, windows media video, vob
- Graphics: bmp, jpg, jpeg, png, gif, tga, tiff, dib, dds, ppm, hdr, pfm, wmf, pic, pict, pcx, psd
- Audio: mp3, wma, wav, midi

Content creation

- Universal functions like Edit content using cut, copy, delete and paste frame options
- Mix graphics, video, real-time data, paint objects, effects and text in a single content item
- Create multiple graphic and/or text layers in a single content item
- Add entry/exit effects between content items
- Open and edit multiple messages for different sign types/sizes. Easily move from one message to another when editing.
- Create and use custom colors that apply to both text and graphics
- Adjust layer opacity
- Quickly add a background to a message with either animated or static images
- Supports scenes (concept similar to PowerPoint slides).
- Text editing functions
- Graphic editing functions with line, ellipse, rectangle and magnifier tool
- Define and load custom items

Audio Support

- Play background audio and video with audio encoded

Play/Preview function

- Preview messages with the correct aspect viewing ratio
- Preview a message immediately after making changes

Redundancy system

- Workstations are equipped with RAID-5 system
- Optional synchronized playback (slave) system

Scheduling

- Schedule message files or display controls with assigned play properties such as date, time, number of times to play, etc.
- Scheduling by weekly or daily recurrences
- Mix graphic, text, animation, audio files and display controls in a single schedule
- Independently schedule on different zones
- Repeat content on zones

Layout

- Partition a sign into user-definable zones that can be controlled independently
- Overlap zones with transparent backgrounds for a "picture-in-picture" effect

Interactive functions

- User-defined action buttons launch any combination of content, play lists, and schedules for quick, easy display.
- Trigger action on multiple displays at the same time or with a relative delay against the trigger time
- Organize messages into categories for interactive display (e.g. score, half-time, concessions, advertisements, etc.)
- Prioritize actions to play in sequence, after the current message, or interrupt the current message
- Determine a hold time for static images
- Change the properties (priority, hold time, etc.) on multiple actions simultaneously.

Logging and reporting

- Logging of each message as it plays including time and status
- Create a log report that can be sorted by sign and content

Interfaces to real-time data sources

- Time of day (from PC clock)
- Count-down timer
- RSS feed
- Barco MP70 Sport Scoring device (RS232)
- Custom interfacing of live data stream or scoring devices on demand

D320 Control

- D320 input action supporting the same functionality as Director Toolset presets

R59996
M00363-R00-0310-DS

The information and data given are typical for the equipment described. However any individual item is subject to change without any notice. .

Barco
Pres. Kennedypark 35, 8500 Kortrijk, Belgium
Tel. +32 56 36 89 70 - Fax + 32 56 36 83 86
email: sales.media@barco.com

BARCO