

Thales Battlespace Transformation Centres

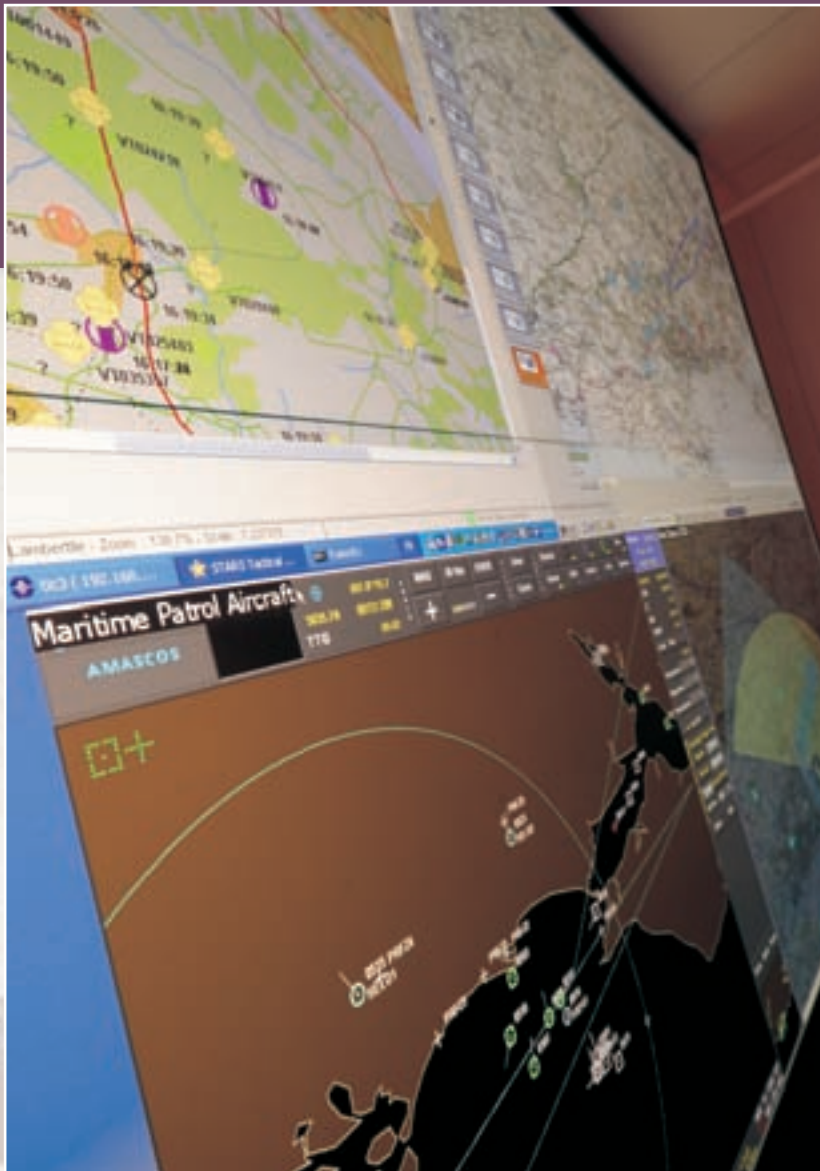
Enhanced battlelab capabilities

“The use of Barco’s display wall results in clear operational benefits, made possible through simultaneous viewing of selected data and easy and fast switching between various layouts.” ”



With its Battlespace Transformation Centres (BTC) Thales is addressing the need for evaluation of new technologies and capabilities that support the military and security forces in facing the world’s new threats. Barco’s video wall technology supports Thales in reducing product development cycles and limiting the risk of investment.

The BTC offers the possibility to exercise the process of Concept Development & Experimentation (CD&E) in the world of Network Enabled Capabilities. Within the BTC, policy and practice are brought closer in order to identify potential goals, detect and analyze risks and explore migration paths providing a smooth and affordable transition from legacy to Network Enabled Capabilities.



New technology challenges

With the emergence of new types of threats like international terrorism and the rising number of international operations around the world, the missions and role of the military and security forces are continuously evolving. These new changes have led to technology challenges such as interoperability, network-centricity and more efficient information fusion. Through the CD&E process, quantified evidence is provided of benefits of solutions that are being evaluated and that will support investment decisions of Thales' customers. A successful application of the CD&E process drastically reduces Thales' product development cycles, and limits the risk of investments in less needed or invalidated solutions. Typical development cycles in the military and security domains amount to two to three years.

Common-Operational-Picture visualization



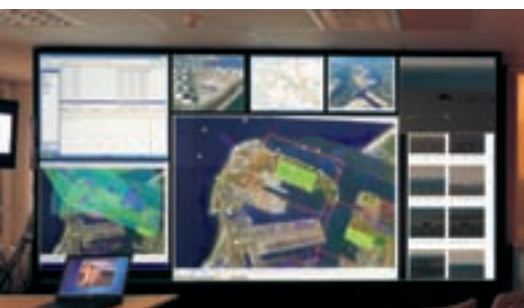
CD&E sessions take place in the Transformation & Integration Centre (TIC): the Colombes (France) site features a dual-room environment linked through a network-centric architecture. The operational room hosts the operators and engineers who execute CD&E simulation sessions. The central room allows the visualization of the common operating environment of the simulation session, and the visualization of real-time simulation statistics using a combination of individual desktop PCs and Barco's rear-projection technology. Barco's solutions offer Thales a network-centric visualization platform that integrates information from various different sensors and sources.



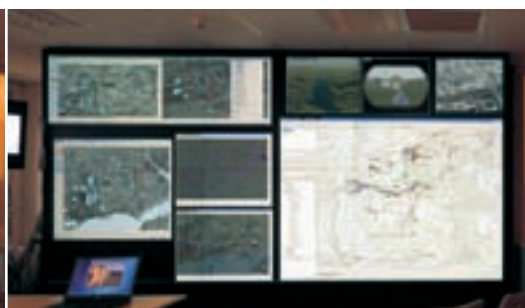
Shared situational awareness

Barco's 67" high-resolution DLP™ rear-projection displays in a SXGA+ 3x2 configuration are optimized for 24/7 mission-critical applications. The display controller series for intelligent information fusion features unique archiving, redundancy, dynamic-adaptive bandwidth and content redistribution options. Barco's display management software is ideally suited for Common-Operational-Picture and scenario building and content sharing, thus enabling optimum shared situational awareness.

The use of Barco's display wall results in clear operational benefits, made possible through two distinct capabilities. First, the video wall allows the simultaneous viewing of selected data, previously combined in custom-designed layouts, and easy and fast switching between these layouts. Second, it allows the flexibility to bring a variety of sources, secured and non-secured, from the collaborative network of facilities in various locations worldwide within a single view (see pictures 1, 2 & 3 below).



1



2



Copyright Thales

3

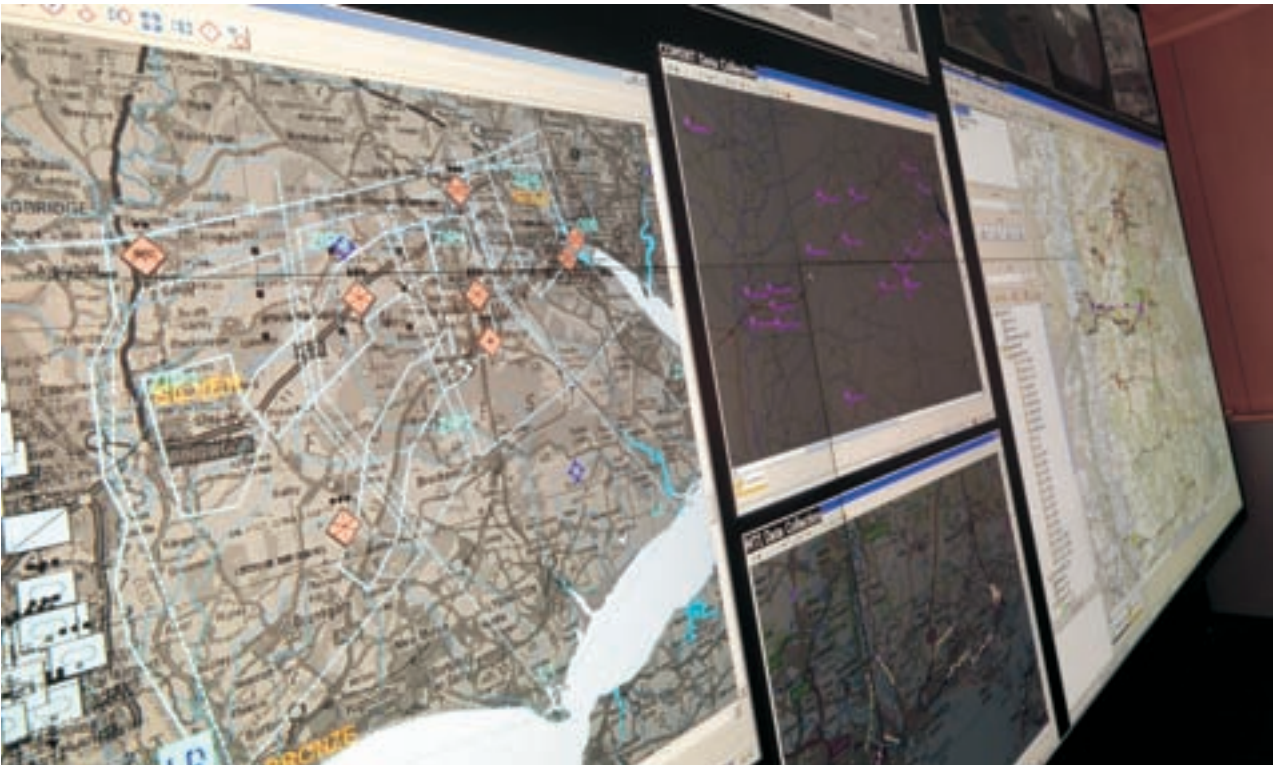
Network-enabled capabilities

The BTC is leveraging on the expertise of the Thales group in designing and developing joint capabilities for air, naval, land and security forces.

The BTC is a collaborative network of facilities in various locations worldwide operating across Thales divisions and established locally in multi-domestic countries. The center allows the evalua-

tion of transformation options that provide a smooth and affordable transition from legacy to network-enabled capabilities. The integration platform is used by operators and engineers from the government and industries to architect new network enabled capabilities, trading off capabilities and cost, and identifying possible capability gaps.

Barco's visualization technology is in operation at Thales BTC France, the Netherlands, Norway, Belgium, Spain and Switzerland. Furthermore, Barco is fully committed to extend its technology partnership with Thales BTC by integrating its network-centric visualization technology.



Ref. n° R599175SSTE0308R000

Barco is an ISO 9001 registered company.
The information and data given are typical for the equipment described. However any individual item is subject to change without any notice.
© July 2007 by Barco. DLP™ technology by Texas Instruments offers crystal clear images with superior quality. DLP is a trademark of Texas Instruments.

Barco - Belgium
President Kennedypark 35, 8500 Kortrijk
Phone (32) (56) 262031
E-mail sales.controlrooms@barco.com

Germany Phone (49) (721) 6201-0
USA Phone (1) (678) 475-8000
Brazil Phone (55) (11) 3842-1656
Japan Phone (81) (3) 5762-8720
Hong Kong Phone (852) 2397-0752

BARCO

Visibly yours