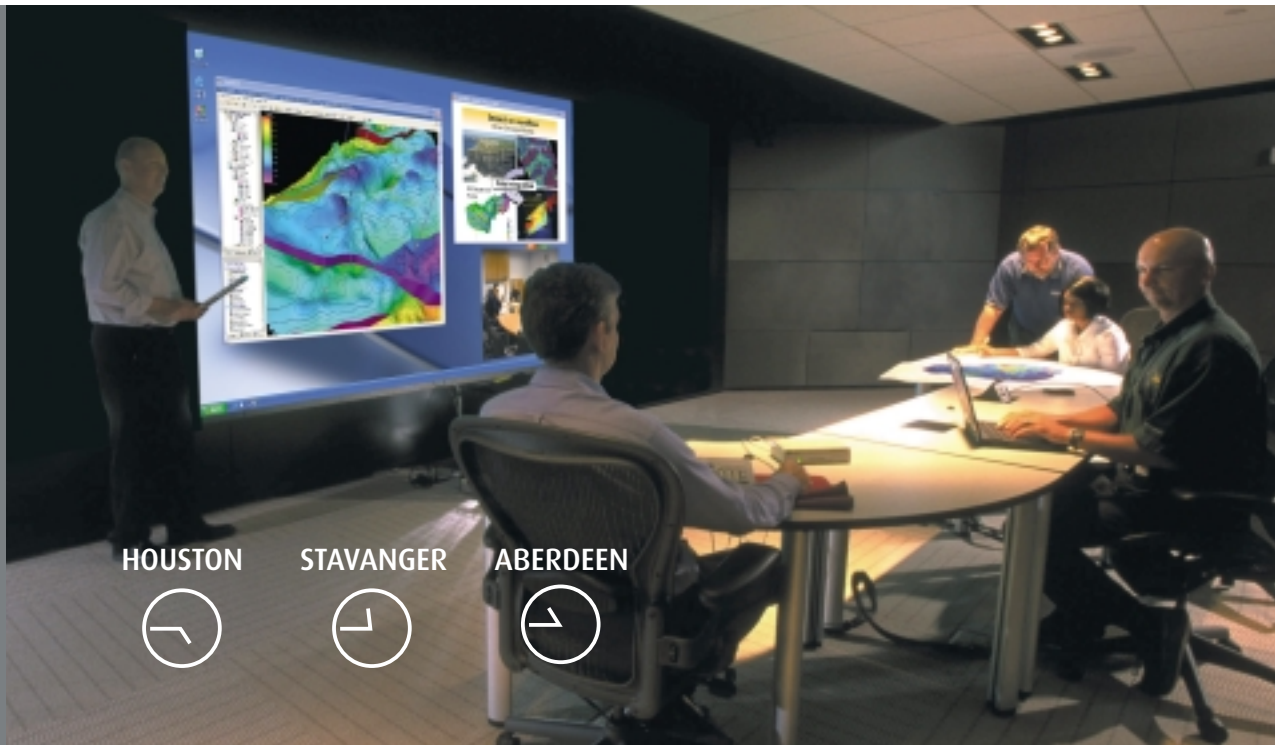


Barco VR Workroom



Multi source 3D windowing for efficient multi-site collaboration

- Large 16:9 screen powered by 2 Barco iCon HDTV projectors
- Powerful integrated upgradeable Pentium 4-based display servers
- Utmost uniformity, no blend
- Superior detail: HDTV, 1920 x 1080 pixels
- Access all sources via windows XP desktop
- Freely position and scale mono and stereo windows
- Display all info simultaneously on one canvas: video, data, network
- Interact with the data through wireless mouse or tracking devices
- Enhance multi-site collaboration by linking Barco VR workrooms to your network
- Centrally manage your networked VR workrooms

BARCO

Visibly yours

Exciting multi-site collaboration with high resolution display capabilities

Barco VR Workroom: network centric visualization

Passive stereo windows

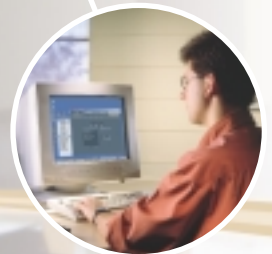
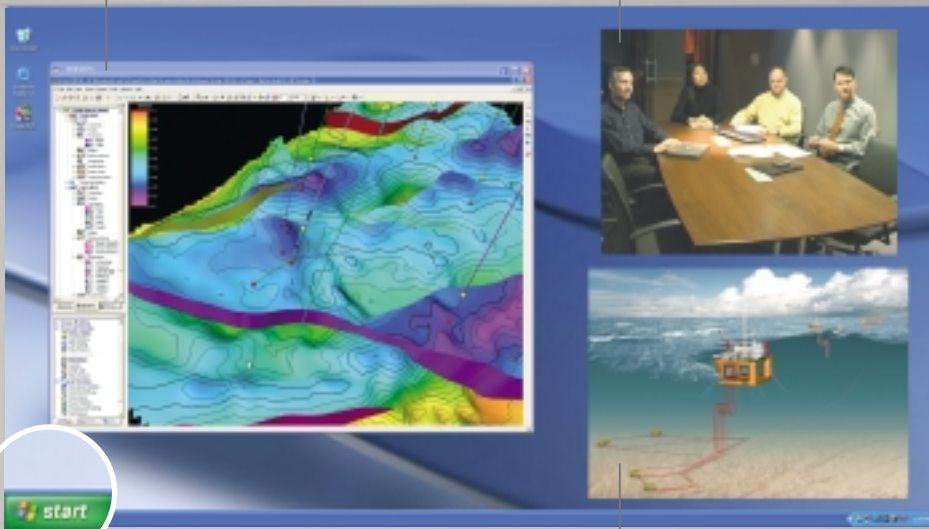
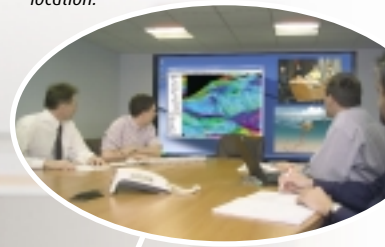
Interpreting seismic volumes, complex reservoir models, well logs, and geological cross sections reveals features not apparent on flat sections.

Freely position and scale the windows to suit your specific needs. Any window layout can be saved and recalled from the Windows desktop.

Up to four external video or data windows can be added to the projector's internal computer windowing capabilities.

Stream video content over the network. Offshore camera pictures can be opened in a window for onshore analysis.

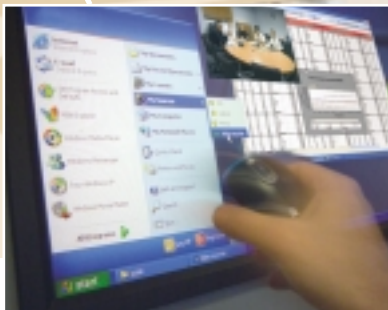
Multi-site collaboration
Control over a projector can be passed instantly over LAN to any meeting location.



Share all information on one high-resolution canvas
External video, powerpoint presentations, excel data sheets.

Immediate access to all information available on the company network, wherever the location of the data server.

Setup, monitor and manage all your Barco VR workrooms worldwide, from your central IT/AV department



Easy and intuitive operation using Windows XP

Operation through the familiar Windows™ XP desktop interface enables users to control all content with a mouse and keyboard, eliminating the need for a traditional remote control.

Preliminary - June 2005



Barco Simulation is an ISO 9001 registered company. The information and data given are typical for the equipment described. However any individual item is subject to change without any notice. The latest version of this product sheet can be found on www.vr.barco.com.

Barco Simulation

US Headquarters:
600 Bellbrook Avenue - Xenia, OH 45385-4053
Tel. +1 (937) 372-7579 • Fax +1 (937) 372-8645
email: eis@barco.com

European Headquarters:
Noordlaan 5, B8520 Kuurne - Belgium
Tel. +32 56 36 82 11 • Fax +32 56 36 86 51
email: info.simulation@barco.com



Visibly yours