

BARCODATA 2100

'Plug & Play', Full-Colour LCD Projector

The BARCODATA 2100 is a compact, portable, single panel LCD projector, for the projection of high brightness video and computer images on screens up to 6 m (20 ft.) wide. The high light output, easy set-up and extremely flexible design of the BARCODATA 2100 make it a powerful and dynamic presentation tool for small to medium size audiences.

Wide compatibility

- Standard Video (PAL, SECAM, NTSC) as well as S-Video (S-VHS, Hi8)
- All desktop and laptop computers with a resolution up to 1,024x768 pixels
- High definition, extended or improved television standards
- Supplied with BARCO's Universal VGA interface which allows the connection of virtually any desktop computer or portable computer to the projector without signal loss or image degradation, even when the computer is located far away from the projector

'Plug & Play' presentation projector with state-of-the-art optical system

The BARCODATA 2100 is truly a 'Plug & Play' portable large screen projector for dynamic presentations.

- 575 W metal-halide lamp
- Active matrix colour LCD panel with SVGA resolution (800 x 600 pixels)
- A wide range of lens options are available
- Screens up to 6 m (20 ft.) wide
- Built-in stereo audio amplifier and loudspeakers (2x10 W)

Extremely user-friendly and flexible projector

- Logical on-screen menus, accessible through a convenient backlit infrared remote control unit
- Extensive user facilities including image size, shift, zoom, freeze and built-in test patterns
- RS232 serial communication input
- Table or ceiling mount configuration
- Front or rear screens

Special Offer!

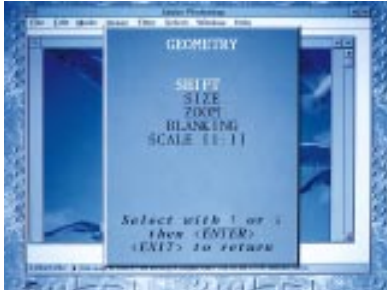
Now supplied with:

- SD (1.2:1) or SD (1.7:1) lens
- BARCO's Universal VGA interface



BARCO

Compact, easy-to-use LCD video and data projector



Logical menus and intuitive on-screen displays greatly simplify control and set-up of the BARCODATA 2100.

Logical on-screen menus

The BARCODATA 2100 features intuitive on-screen menus, accessible through a convenient backlit infrared remote control unit.

Extensive user facilities including image size, shift, zoom, freeze and built-in test patterns provide superior control and unmatched versatility.

Intelligent Pixel Map Processor

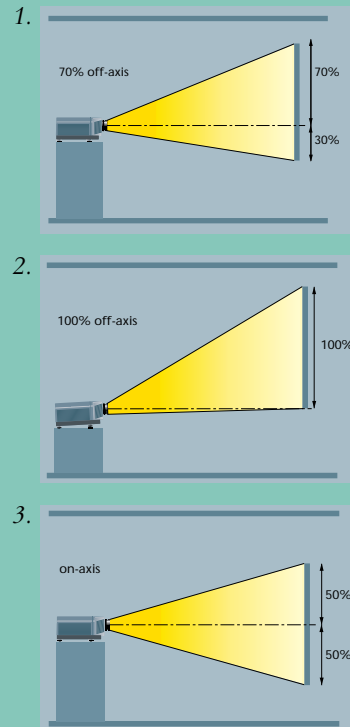
The BARCODATA 2100 is equipped with a patented, high-performance Pixel Map Processor. This Pixel Map Processor converts all incoming signals to the full resolution of the LCD panels in order to maximise the light output and resolution of the projector.

Flexible installation configurations

The BARCODATA 2100 can be used in front or rear screen installations, and in table or ceiling mount configurations. The projector can be used in a horizontal as well as vertical position. The BARCODATA 2100 is factory adjusted for a 70 % off-axis projection.

The unit can be adapted for use in a 100 % off-axis configuration by means of additional leveling feet (only with SD(1.7:1) lens and SD(1.6-1.9:1) zoom lens).

An optional Off-axis to On-axis Kit converts the BARCODATA 2100 for on-axis projection, particularly useful for rear-screen installations.



Universal VGA interface

As part of a special offer, the BARCODATA 2100 is supplied with BARCO's Universal VGA interface. This easy-to-use interface allows the user to connect virtually any desktop or portable computer to the projector. With a bandwidth of 200 MHz, the Universal VGA interface buffers and amplifies any RGB analog signal without signal loss or image degradation, even when the computer is located far away from the projector.

The Pixel Map Processor calculates every pixel to be displayed by means of state-of-the-art digital signal processing techniques. The result is optimal picture quality, with smooth and exceptionally readable characters. The integration of the Pixel Map Processor enables the BARCODATA 2100 to display a wide range of computer data and graphics standards including CGA, EGA, VGA, SuperVGA (800x600) and XGA (1,024x768) without any loss of information.



Technical specifications

Light output

1,000 lumens full white
750 ANSI lumens
Brightness uniformity:
> 70% for the total screen area.

LCD panel

Single 10.4" active matrix colour LCD panel with SVGA resolution (800x600), selected for a minimum of pixel defects.⁽¹⁾

Lamp

575 Watt metal-halide 'hot restrike' lamp
Expected lifetime: 1,000 hours⁽²⁾

Available lenses

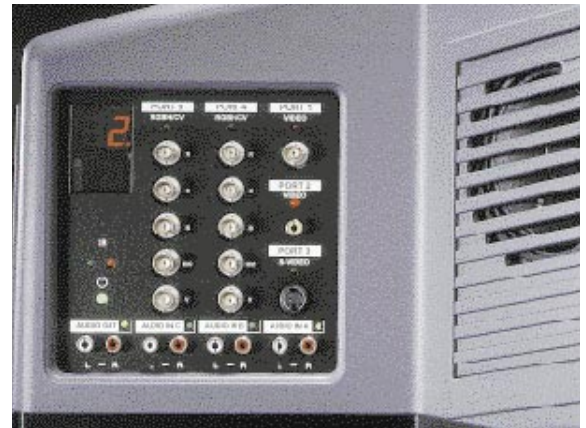
- Fixed focal length lenses are available with a very short throw ratio of 0.8:1, 1.15:1 (optimised for Video) and 1.2:1 (optimised for Data projection) and with a throw ratio of 1.7:1.
- A variable focus lens is available with a throw ratio between 1.6:1 and 1.9:1.

Lens type	Order nr
SD (0.8:1)	R9829640
SD (1.15:1 - video)	R9829480
SD (1.2:1)	R9829485
SD (1.7:1)	R9829500
SD (1.6-1.9:1) zoom	R9829660
Lens package SD (1.15:1) + SD(1.7:1)	R9829560



convenient backlit infrared remote control unit provides quick and easy access to all adjustments of the BARCO-DATA 2100.

The BARCODATA 2100 has a built-in source switcher to accommodate a wide range of video and computer data sources.



Screen sizes

Min.: 1.0 m x 0.75 m (3.2' x 2.4')
Max.: 6.0 m x 4.5 m (20' x 15')

Contrast ratio

>150:1 (on 5x4 B/W checkerboard)
>300:1 (full white/full black)

Inputs

The projector has 5 inputs:

- Port 1: Video on BNC connector
- Port 2: Video on Cinch (RCA) connector
- Port 3: S-Video on 4-pin mini-DIN connector
- Port 4 & 5: RGB analog input on 5 BNC connectors, sync on green or separate sync, sync can be 2-level or 3-level
- 3 stereo audio inputs on Cinch (RCA) connectors
- RS232 input (D9 connector) loop-through for projector control through a PC or other control unit
- Communication input (D9 connector) for peripherals
- Mini-jack (3.5 mm) for wired remote control

Remote control

All controls are accessible through a soft-touch panel or a user-friendly backlit infrared remote control.

- Source switching
- User settings per source
- Installation and service adjustments
- Audio controls (infrared remote only)

Compatibility

The BARCODATA 2100 is compatible with:

- All Video sources (PAL, SECAM, NTSC) in Composite, S-VHS or RGB format

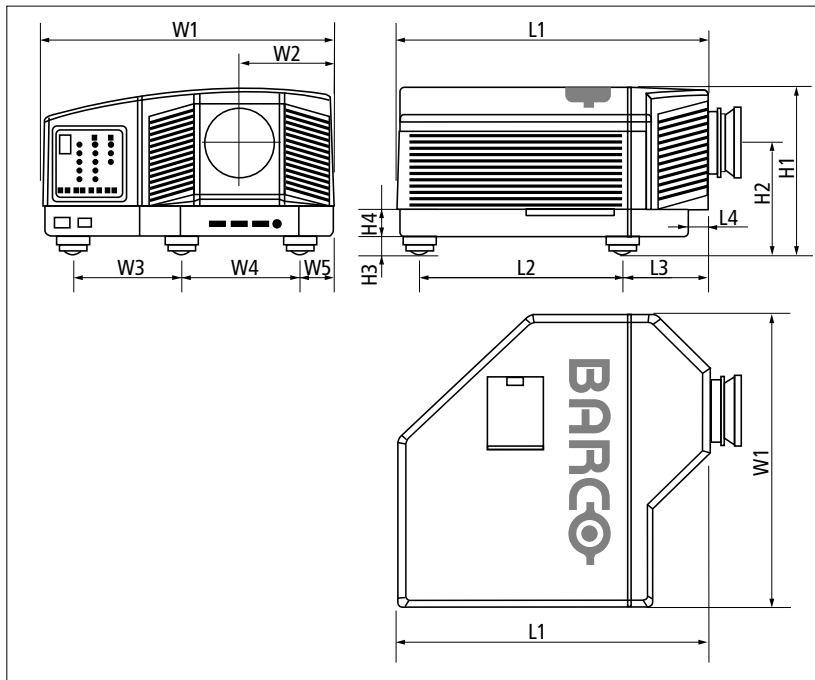
- All computer graphics formats from CGA, EGA, VGA (640x480), SuperVGA (800x600) or XGA (1,024x768) graphics card
- Most Macintosh computers
- All currently proposed HDTV, extended and improved television standards (Eureka 95, Hi-Vision, ACTV, IDTV, EDTV,...)
- Most computer sources with a pixel clock <80 MHz

Special features

- Extended user facilities including image size, shift, zoom, freeze,...
- Internal test patterns (outline, colour bar, checkerboard,...)
- External auto-diagnostics with 2 x 7 segment LED display for source selection and error codes
- Intuitive on-screen display: Installation and service screens, barscale display of user settings, on-screen display of selected source
- Adjustable leveling feet
- Colour temperature adjustment (3200K, 6500K, 9300K or custom)
- Specially offered with BARCO's Universal VGA interface (PC connection cables included) which makes it possible to connect many of today's PC graphics cards to the projector without signal loss or image degradation, even when the computer is located far away from the projector.

(1) Further information is available on request.

(2) For applications with projectors in continuous operation, BARCO offers an optional Long Life Lamp, which provides 2,000 hours lifetime with approximately 10 % reduction in initial luminance.



Dimensions	mm	inch
L1	642	25.28
L2	405	15.94
L3	201	7.91
L4	63	2.48
W1	603	23.74
W2	195	7.68
W3	225	8.86
W4	245	9.65
W5	68	2.68
H1	335	13.19
H2	224	8.82
H3	35	1.38
H4	55	2.17

• An off-axis to on-axis kit is available which can convert a BARCODATA 2100 for on-axis projection, ideal for rear-screen applications

Audio

- Built-in stereo audio amplifier (2 x 10 W rms)
- 2 x 10 W loudspeakers
- Stereo audio output on 2xCinch (RCA) connectors

Safety regulations

The BARCODATA 2100 complies with UL1950 and EN60950

Electromagnetic interference

The BARCODATA 2100 complies with FCC Rules & Regulations, part 15 Class B and CE EN 55022 Class B

Warm-up time

Less than 2 minutes to meet full specifications

AC power

Switchable between 120 VAC and 230 VAC

Power consumption

230V: 740 W/5A
120V: 750W/9A

Weight⁽³⁾

Net weight 22 kg (49 lbs)
Shipping weight 39 kg (86 lbs)⁽⁴⁾

Accessories included

- Infrared remote control
- Owner's & installation manual
- Power cord with CEE (7)VII plug
- Cables for PC connection with Universal VGA interface

Order information

BARCODATA 2100 R9001070

RCVDS 05 source selector to connect more than 10 different video, data and graphics sources to the projector

230 V: R9827880
120 V: R9827889

VS05 Video/HDTV source selector to connect up to 5 Composite Video, 3 S-Video and 1 RGB analog source to the projector R9827890

Remote infrared receiver R9827515

Ceiling mount 2/3000
• With pulley system R9829610
• Without pulley system R9829611

575 W metal-halide lamp R9829510

Long life lamp⁽²⁾ R9829600

Kit off-axis to on-axis R9829540

Service tool kit R9829530

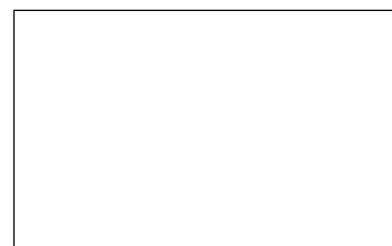
Windows Communication software R9829670

(3) Without lens.

(4) With Universal VGA interface.

BARCO Projection Systems is an ISO9001 registered company.

The information and data given are typical for the equipment described. However any individual item is subject to change without any notice.



BARCO Projection Systems - Head Office
Noordlaan 5 8520 Kuurne, Belgium
Tel: +32 / 56 / 368 211 Fax: +32 / 56 / 351 651
E-mail: sales.bps@barco.com
Visit BARCO at the web: <http://www.barco.com>

