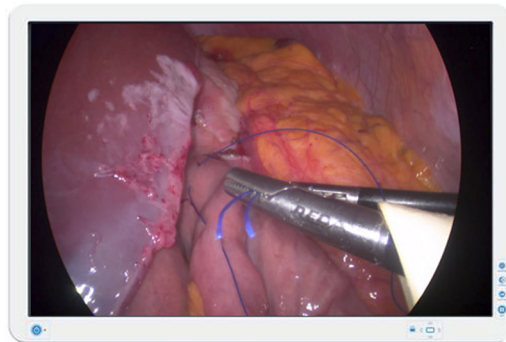


AMM240ED

24" surgical display



- **Built for endoscopy imaging**
- **All-round connectivity**
- **Safe for near-patient use**

Barco's AMM240ED is a 24-inch near-patient surgical display with LED backlights, featuring a 1920x1200 resolution. Purpose-built for endoscopy imaging, the AMM240ED is a cost-effective but extremely reliable display. Surgical video and images can be placed in Picture-by-Picture mode with independent adjustments.

All-round connectivity

The AMM240ED supports a broad range of input types including DVI, VGA, RGB, Component & Composite Video as well as HD/SD SDI.

Safe for daily use near patients

Thanks to the sealed design (rated IP22), a protective filter and cable cover, the AMM240ED is safe for use near patients. It also ensures safe and easy mounting onto surgical arms thanks to the VESA compliance.

PRODUCT SPECIFICATIONS**AMM240ED**

Screen technology	TFT AM LCD / LED Backlight
Active screen size (diagonal)	611.3 mm (24.07")
Active screen size (H x V)	520.4 x 326 mm (20.46 x 12.83")
Aspect ratio	16:10
Resolution	1920 x 1200
Pixel pitch	0.27 mm
Color support	16.7 Mio (8 bit)
Viewing angle	178° Hor /178° Ver
Luminance	300 cd/m ²
Contrast ratio	1000:1
Gamma curve	1.8, 1.9, 1.95, 2.1,2.2, 2.3, 2.4
Front protection screen	anti-reflective PMMA protective cover
Video input signals	1xDVI-I, 1x HD15, 1x Y/C, 1x 3G-SDI, 1x RGBS / YPbPr,
Video output signals	1x DVI-I, 1x 3G-SDI
Features	Picture in Picture
External power supply	AC input : 90-264 VAC / 47-63 Hz auto-switch DC Output : ±24VDC / 1.7A
Dimensions w/o stand (W x H x D)	570 x 386.9 x 63.2 mm (22.4 x 15.2 x 2.5")
Net weight w/o stand	7.35 Kg
Mounting standard	75x75 VESA / 100x100 mm VESA
Temperature	Operating : 10°-40°C Storage : -18°-60°C
Humidity	Operating : 25%-75% non-condensing Storage : 15%-90% non-condensing
Compliance	Medical Safety Compliance: CE (Medical Device Class I) IEC 60601-1: 2012 Edition 3.1 EN 60601-1: 2006 +A1:2013 ANSI/AAMI ES 60601-1: 2005/(R)2012 A1:2012, C1:2009/(R)2012 and A2:2010/(R)2012 CAN/CSA-C22.2 No. 60601-1: 14 AS/NZS 3200-1:1988 CCC (GB4943.1-2011) CB-ITE (IEC 60950-1:2005 (2nd Ed); Am1:2009 +Am2:2013
Protection rating	IP22
Green compliance	ROHS-2, REACH, WEEE
Warranty	2 years

Last updated: 15 Nov 2022

Technical specifications are subject to change without prior notice. Please check www.barco.com for the latest information.