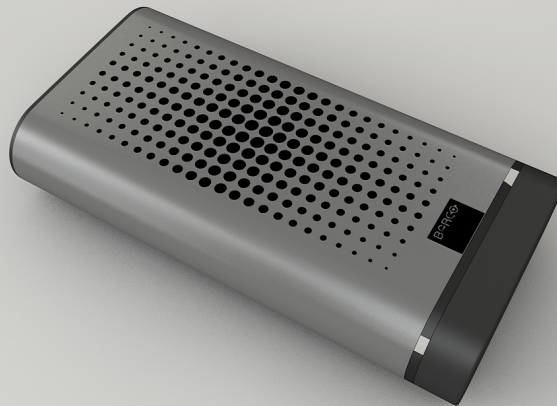


# ClickShare Link

iPad connectivity device for ClickShare



The ClickShare Link offers the possibility to connect an iPad to the ClickShare system. When used, the iPad behaves like an additional laptop.

## Present from your iPad

iPads are becoming increasingly important as mobile meeting room devices, as they are small and extremely easy to use. The ClickShare Link allows users to get the content from the iPad touchscreen to the large meeting room screen. There are no limitations to the content to be displayed: what you see on the iPad screen is shown "as is". However, note that the ClickShare Link only streams video, so sound is not supported.

## Two connection options

The ClickShare Link is to be attached to the (rear) USB port of the ClickShare Base Unit. Connection with the iPad occurs using a video cable, or wireless via Apple TV (not included in the package).

- Cable:
  - Plug in & it works
  - Requires HDMI adapter for iPad
  - 1 iPad at a time, together with other laptops in the composition
- Apple TV:
  - Wireless
  - The user needs to activate AirPlay on the iPad
  - 1 iPad at a time, together with other laptops in the composition

## Using the ClickShare Link

The ClickShare Link is connected to the Base Unit via USB. The ClickShare Base Unit recognizes the Link and automatically supports the input of the iPad. The iPad

screen content is included in the composition on the meeting room display, as if it were an additional laptop.

### **Option 1: connection via cable**

Connect a HDMI to DVI video cable to the ClickShare Link and make the HDMI connection available for the iPad user. Plugging the HDMI cable into the iPad HDMI adapter will bring the image on the screen.

In summary:

- Plug in and it works
- Requires HDMI adapter for iPad
- 1 iPad at a time, together with other laptops in the composition

### **Option 2: connection via Apple TV**

Connect an Apple TV to the ClickShare Link using a HDMI to DVI video cable. Connect the Apple TV either to the ClickShare Base Unit using a LAN cable, or connect it to the corporate network. The iPad user can connect to the appropriate network and start sharing by enabling "AirPlay mirroring".

In summary:

- Wireless
- The user needs to activate AirPlay on the iPad
- 1 iPad at a time, together with other laptops in the composition

**PRODUCT SPECIFICATIONS****CLICKSHARE LINK**

Dimensions	116 mm x 60 mm x 23 mm (4.57" x 2.36" x 0.91")
Weight	< 250g
Connection with Base Unit	USB
Video Input	Single link DVI
Video Output	USB mini type B
Power	Using external power adaptor (included in the package): <ul style="list-style-type: none"><li>■ DC output: 5V, 2A</li><li>■ AC input: 100-240V, 50-60 Hz, 0.36A</li><li>■ Wall-plug type</li><li>■ Included AC clips: types A, C, G and I for world wide coverage</li></ul>
Power consumption	Maximum 5W
iPad, iPhone and Android compatibility	Support for iPad via cable or Apple TV HDMI and/or DVI cable not included in the package
Audio	No audio
HDCP	Not supported
Weight	170 g
Included in the package	<ul style="list-style-type: none"><li>■ HDMI to DVI convertor</li><li>■ 3ft USB cable</li><li>■ DC adaptor</li><li>■ ClickShare Link</li></ul>

Last updated: 19 Sep 2019

Technical specifications are subject to change without prior notice. Please check [www.barco.com](http://www.barco.com) for the latest information.