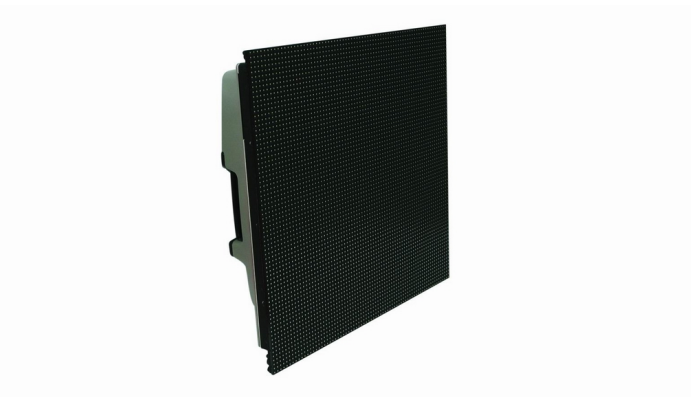
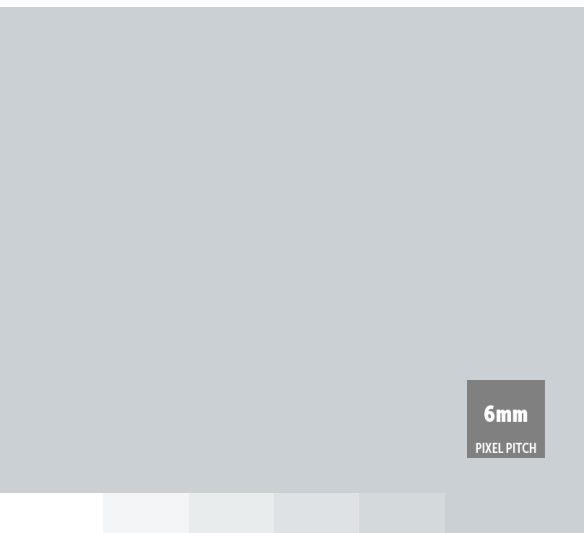


ILite 6 BK

6mm pixel pitch, 2,000 nits surface-mounted LED tile



Thanks to its attractive price-performance ratio, Barco's ILite 6 BK is a smart choice for events and indoor installations that require a modular and thin LED tile. What's more, it is easily and quickly serviceable. The high-class LED technology makes sure that your overall image consistency remains excellent, even when tiles are added to or removed from the display.

Complete rental solution

The ILite 6 BK has been designed with the road in mind and features easy set up, simple serviceability (OSD, Tiles swap) and upgradeability. As a complete rental solution, it includes rugged rental structures, sturdy flight cases and the new DX-700 which allows you to have your display installed in no time.

Cross-rentable

Thanks to Barco's renowned color calibration technology, the ILite 6BK tiles are fully cross-rentable. This technology allows you to mix and match tiles of different batches and various run-time ages to obtain a seamless display with a perfect image every single time. The ILite 6 BK is also compatible with the complete range of existing ILite peripherals and sources.

Best price-performance

ILite can be used in all indoor environments and offers you the best visual performance for a minimum investment, hereby ensuring maximum return on investment.

PRODUCT SPECIFICATIONS**ILITE 6 BK**

Pixel pitch	6,22 mm
Brightness	2,000 nits
LED configuration	3-in-1 SMD
Pixel density	25,829/sqm 2,402/sqf 5,184/tile (72x72)
Hor. viewing angle	120° (min 50% brightness)
Vert. viewing angle	+60, -60° (min 50% brightness)
Contrast ratio	3,000:1 (at 500 lux)
Lifetime	45,000 hours to 50% of initial brightness
Power consumption	335 W/tile (max) 156 W average
Operation power voltage	200-240V / 50-60Hz
Tile dimensions	Width: 448mm Height: 448mm Depth: 150mm
Weight / Tile	14.3 kg
IP rating	Indoor use only
Processing	14 bit/color
Colors	4.4 trillion
Refresh rate	400Hz
Foot build-up	Max. 12 tiles high
Truss build-up	Max. 15 tiles high
Link interface	DVI interface (DVI connector)
Max link length	4.5m (with Barco DVI cable)
Interfaces	2x DVI link
Max power cascade connection	6 tiles
Serviceability	Back
Operating temperature	0-40°C
Storage temperature	-20 -60°C
Operational humidity	35-85%
Storage humidity	10-90%
Source compatibility	CVBS, YC, YUV, RGB, DVI, SDI, HDSDI (with DX700: and Dual link DVI, Dual link HDSDI)
Operatable digitizer	DX-700 (with DVI output card), D320, LEDPRO
Certifications	CE classA, TUV, FCC, Class A, ETL, RoHS

Last updated: 26 Nov 2019

Technical specifications are subject to change without prior notice. Please check www.barco.com for the latest information.