

ClickShare AV Integration Guide

DATE May 2018

AUTHORS **Gauthier Renard** | Product Manager ClickShare

Michaël Vanderheeren | Product Line Manager ClickShare

Johan Pirot | Head of MX Initiatives & Strategic Partnerships



Table of content

| | |
|--------------------------------------------------------------------------------|-----------|
| Introduction | 3 |
| Integration with Video Conferencing and Unified Communication solutions | 3 |
| Integration with Logitech SmartDock | 5 |
| Integration with Zoom Rooms | 7 |
| Integration with Vidyo | 9 |
| Integration with Cisco Systems | 11 |
| Disclaimer | 13 |

Introduction

ClickShare (CS) is Barco's wireless presentation and collaboration solution that makes sharing content seamless, easy and stress-free: any meeting participant can share content with only the click of a button. The universal USB-powered ClickShare Button and multi-platform ClickShare App avoid the unsightly mess of cables often seen in meeting rooms. Next to this, sharing with ClickShare does not alter your screen size or aspect ratio, so what you see on your laptop screen is replicated exactly on the big meeting room screen. ClickShare transforms your meeting into a complete collaborative experience with only a single click.

This guide helps you to optimally deploy ClickShare units in the current set-up of (remote) collaboration meeting rooms. It gives an overview of the different specific integration settings and some examples on how to perform the set-up and installation of ClickShare units.

Integration with Video Conferencing and Unified Communication solutions

The ClickShare Base Unit has been designed to work both in stand-alone mode and in an integrated environment. Many of the existing Video Conferencing and Unified Communication solutions have a HDMI input, either natively or via USB adapter, which allows the presenter to share content within the context of a remote meeting. The HDMI output of the ClickShare Base Unit can be connected to this input to allow wireless collaboration to take place within the meeting room and beyond the meeting room.

ClickShare adds value for both end-users and IT managers:

- End-users now have one easy-to-use content sharing experience across common meeting rooms equipped with ClickShare, and remote collaboration rooms. No additional content sharing applications to install and learn, e.g. installing specific apps to share their content is not needed. The same way of working and the same user experience applies in all rooms.
- ClickShare allows both employees and guests to share from their laptop in a secure way with the Button, and have a ClickShare-specific Wi-Fi network for app-based devices.
- The end-user doesn't have to "mess" with cables whenever he wants to perform screen sharing with higher performance. Finding the right adapters to HDMI, dealing with resolution changes, etc. are no longer an issue. When an end-user wants to temporarily disable his screen sharing, there is no need to unplug the HDMI cable and re-plug it whenever ready, actions that typically take quite some time to sync again. The user can just click the button to share whenever he is ready, or to stop sharing.
- IT managers can deploy our content sharing solution in a fully secure way. ClickShare offers 3 levels of security to fit any enterprise environment, and by adding ClickShare to a remote collaboration solution, the same security applies. It's no hassle to make other applications work across different secure, BYOD, guest and other corporate networks.

Besides other specifics, some of the Video Conferencing and Unified Communication solutions allow the meeting participants to select whether the input is presented or not. In many cases this can be controlled using the meeting room control panel, or alternatively, the VC device can be configured to share whenever a signal is detected on the HDMI input.

To provide an optimal Video Conferencing experience and allow participants to see each other's video camera stream maximized when no content is being shared, ClickShare can be set to automatically power-down the HDMI output when no content is being shared. This way, the Video Conferencing or Unified Communication solution will remove the input from the screen as no signal is being detected.

To configure this option, simply follow the next steps:

- Connect to the Base Unit, via Wi-Fi or an Ethernet connection, browse to the ClickShare Configuration web interface and log in (Figure 1).
- On the left, click on the Personalization entry, next click on Wallpaper to review the settings of the wallpaper.
- On the Wallpaper page, verify that “show the wallpaper when no one is sharing their screen” is disabled (Figure 2).
- Press ‘Save changes’ to activate this configuration setting.
- From now on, the ClickShare Base Unit will go to standby when no content is being shared on the screen.

Tip: sometimes you will want to see the wallpaper, e.g. in order to identify which ClickShare Wi-Fi network to connect to with a ClickShare app from a mobile device. This can be done by pushing the button on the front side of ClickShare: the wallpaper will be shown for some time and then disappear again.



Figure 1: The Configurator log-in page

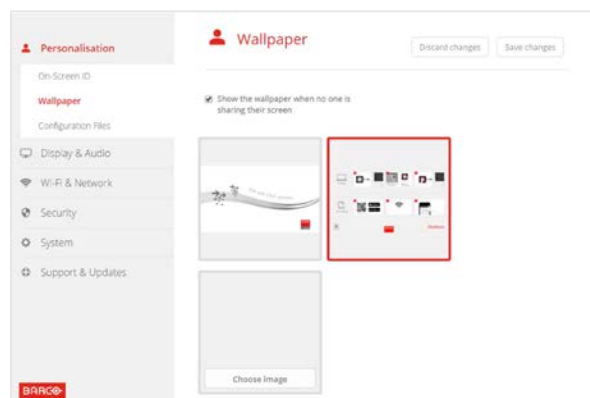


Figure 2: The wallpaper settings page

Integration with Logitech SmartDock

The Logitech SmartDock allows you to tap into the Skype for Business experience for your meeting room. For an even better experience we advise to combine the Logitech SmartDock with the wireless collaboration capabilities of ClickShare. This allows you to tap into your business unified communications strategy and share with a click on the Button.

The ClickShare Base Unit can be connected to the Logitech SmartDock using a standard HDMI cable. Connect the ClickShare Base Unit HDMI output to the Logitech SmartDock HDMI input.

No other cables or connections are required¹. However, when sharing a manual action will be required to show the content within the Skype for Business session. This can be achieved by tapping “start presenting” or “stop presenting” on the Logitech SmartDock screen.

Two simple steps will allow you to overcome the need for user interaction on the Logitech SmartDock when sharing content in the remote meeting.

Enable Auto Screen Sharing on the Logitech SmartDock

To facilitate the automatic presentation of content on the screen a feature called *Auto Screen Sharing* is available on the Logitech SmartDock. This feature will present the content within the Skype for Business meeting whenever a signal is detected on the HDMI input. To enable the *Auto Screen Sharing* feature, please follow these steps:

- On the Logitech SmartDock, tap on the gear icon in the bottom right of the home screen (Figure 3).
- In the pop-up menu tap on the *Settings* entry. The Settings screen will present you with the set-up configuration of your device. On the left you will see different set-up pages including *User Account*, *Features* and *Windows Settings* (Figure 4).
- Tap on *Features* to review the current set-up of the device.
- On the *Features* page, verify that the *Auto Screen Sharing* feature is turned on (Figure 5).
- Tap on Save and Exit to complete the process.

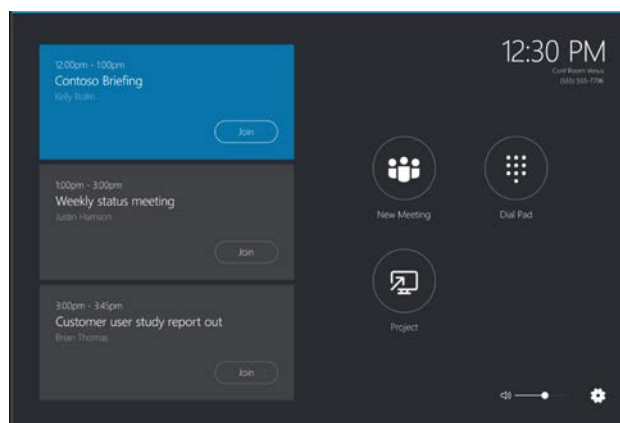


Figure 3: The Logitech SmartDock with SRS home screen, notice the gear icon on the bottom right

¹ The Logitech SmartDock Extender Box or a longer HDMI cable will allow you to mount the ClickShare Base Unit further away from the Meeting Room table where the Logitech SmartDock is positioned.

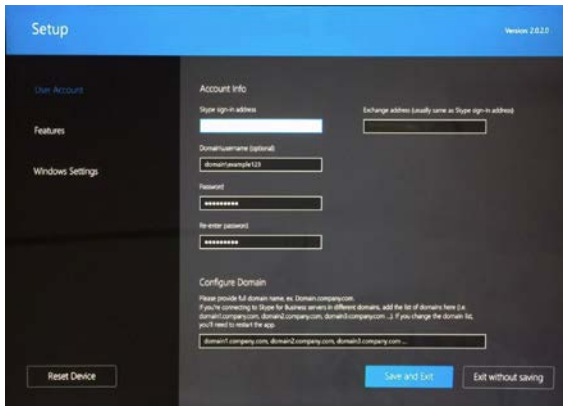


Figure 4: The Set-up screen

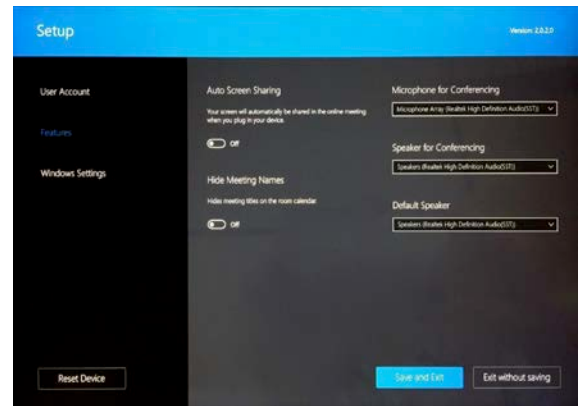


Figure 5: The Features page with Auto Screen Sharing

Enable Auto Standby when no content is shared on the ClickShare

With the Auto Screen Sharing feature enabled the Logitech SmartDock will now present the content within the Skype for Business meeting whenever the ClickShare Base Unit is powered on, independent whether any content is being shared with the ClickShare Button (or ClickShare App). As such, when no content is shared, this will result in the ClickShare wallpaper being shared within your current Skype for Business session and a minimized video camera stream being present at the bottom of the screen.

To maximize the video camera stream when no content is shared, follow these steps:

- Connect to the Base Unit, via Wi-Fi or an Ethernet connection, browse to the CS Configurator web interface and log in (Figure 6).
- On the left, click on the Personalization entry, then click on Wallpaper to review the settings of the wallpaper.
- On the Wallpaper page, verify that “show the wallpaper when no one is sharing their screen” is disabled (Figure 7).
- The ClickShare Base Unit will now go to standby when no content is being shared on the screen.
- The Logitech SmartDock will show “Please plug the HDMI cable into your device” when the ClickShare is in standby. A simple press on the Button is enough to present content on the screen.



Figure 7: The Configurator log-in page

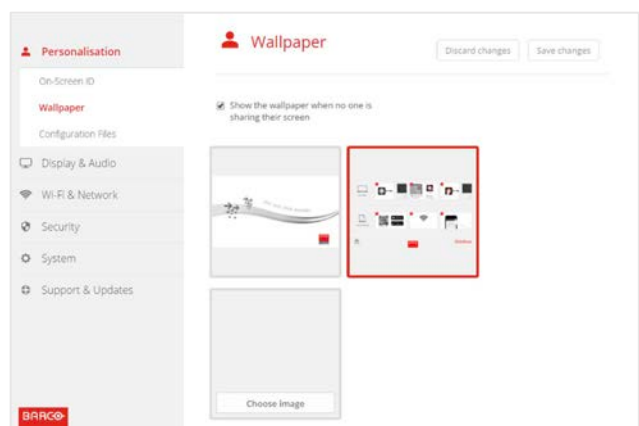


Figure 6: The wallpaper settings page

Integration with Zoom Rooms

Zoom Room allows you to tap into the Zoom remote collaboration experience for your meeting room. Zoom offers its own cloud service and allows you to connect with H.323/SIP and Skype for Business systems. For an even better experience we advise to combine the Zoom Room with the wireless collaboration capabilities of ClickShare. This allows you to tap into your business unified communications strategy and share with a click of the ClickShare Button.

The ClickShare Base Unit can be connected to the Zoom Room using a standard HDMI cable. Connect the ClickShare Base Unit HDMI output with the Zoom Room HDMI input. Since Zoom Room is built on top of standard PC or Mac, a HDMI-to-USB to converter is required². Once the set-up is done, Zoom will always show content when HDMI is enabled, and also transmits this to the remote side. No other configuration is needed.

Enable Auto Standby when no content is shared on the ClickShare

The Zoom Room always presents the content within the Zoom meeting whenever the ClickShare Base Unit is powered on, independent of whether content is being shared with the ClickShare Button (or ClickShare App) or not. As such, when no content is shared, this will result in the ClickShare wallpaper being shared within your current Zoom session and a minimized video camera stream being present at the bottom of the screen. To maximize the video camera stream when no content is shared, follow these steps:

- Connect to the Base Unit, via Wi-Fi or an Ethernet connection, browse to the CS Configurator web interface and log in (Figure 6).
- On the left, click on the Personalization entry, then click on Wallpaper to review the settings of the wallpaper.
- On the Wallpaper page, verify that “show the wallpaper when no one is sharing their screen” is disabled (Figure 7).
- The ClickShare Base Unit will now go to standby when no content is being shared on the screen.



Figure 8: The Configurator login page

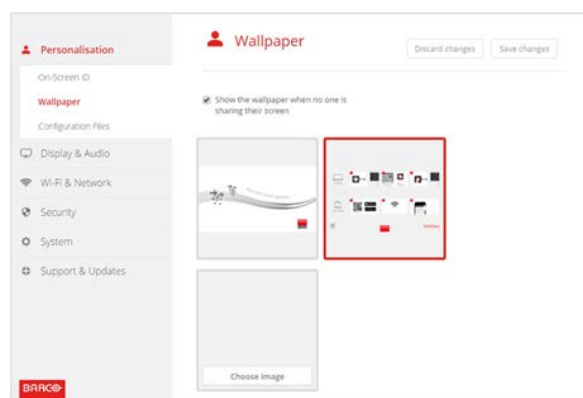


Figure 9: The wallpaper settings page

² More information on the required HDMI-to-USB converter to facilitate capturing on a Zoom Room device can be found on <https://support.zoom.us/hc/en-us/articles/201504265-Wired-HDMI-Screen-Share-via-Capture-Device>
P 7 / 13

Additional recommendation

Sometimes you will want to see the wallpaper, e.g. in order to identify which ClickShare Wi-Fi network to connect to with a ClickShare app from a mobile device. This can be done by pushing the power button on the front side of ClickShare Base Unit. The wallpaper will be shown for some time and then disappear again.

Since the ClickShare Base Unit supports both 1920x1200 and 1920x1080 resolution, when using a HDMI-to-USB converter, the ClickShare Base Unit will output a 1920x1200 resolution when in automatic resolution discovery. Since most displays have a resolution of 1920x1080, it is best to fix the ClickShare Base Unit output resolution to 1920x1080.

Integration with Vidyo

The VidyoRoom allows you to tap into the Vidyo experience for your meeting room. Vidyo offers its own cloud service and allows you to connect with H.323/SIP and Skype for Business systems.

For an even better experience we advise to combine the VidyoRoom with the wireless collaboration capabilities of ClickShare. This allows you to tap into your business unified communications strategy and share with a click on the Button.

The ClickShare Base Unit can be connected to the VidyoRoom using a standard HDMI cable. Connect the ClickShare Base Unit HDMI output with the VidyoRoom HDMI input (provided via a HDMI-to-USB converter that comes with the system). No other cables or connections are required. However, when sharing a manual action will be required to show the content within the Vidyo session. This can be achieved by tapping "start presenting" or "stop presenting" on the VidyoRoom screen. Two simple steps will allow you to overcome the need for user interaction on the VidyoRoom when sharing content.

Enable Auto Screen Sharing on the VidyoRoom

To facilitate the automatic presentation of content on the screen a feature called *Auto-Share Connected Devices* is available on the VidyoRoom. This feature will present the content within the Vidyo meeting whenever a signal is detected on the HDMI input. To enable the *Auto-Share* feature, please follow these steps:

- Go to the VidyoRoom, and login with the admin account.
- In the *Settings* tab scroll down to *Preferences*.
- Toggle to "*Remember Last*".
- Click on *Save* at the bottom of Preferences.
- You might have to share the content one more time with the remote control, afterwards it will happen automatically.

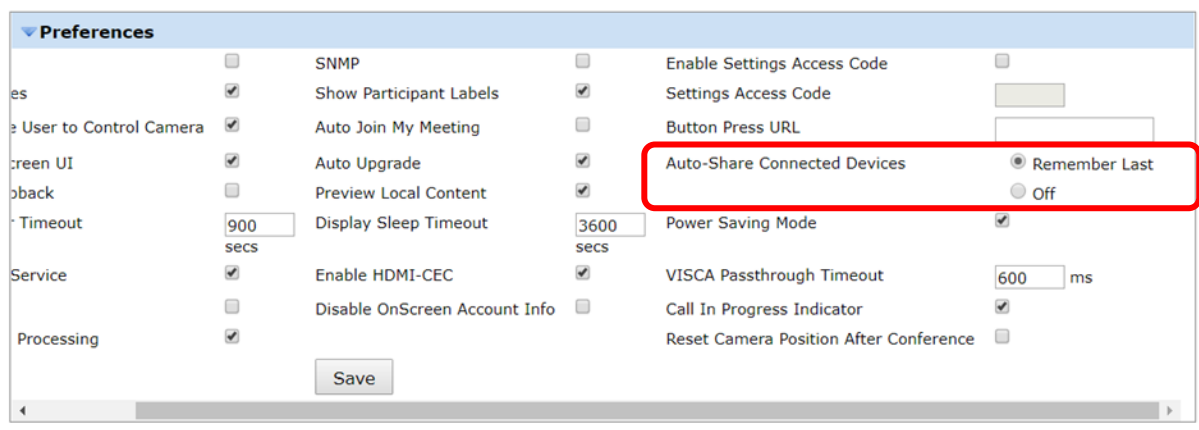


Figure 10: The Set-Up screen

Enable Auto Standby when no content is shared on the ClickShare

With the Auto-Share feature enabled the VidyoRoom will now present the content within the Vidyo meeting whenever the ClickShare Base Unit is powered on, independent whether any content is being shared with the ClickShare Button (or ClickShare App) or not. As such, when no content is shared, this will result in the ClickShare wallpaper being shared within your current Vidyo session and a minimized video camera stream being present.

To maximize the video camera stream when no content is shared, follow these steps:

- Connect to the Base Unit, via Wi-Fi or an Ethernet connection, browse to the CS Configurator web interface and log in (*Figure 6*).
- On the left, click on the Personalization entry, then click on Wallpaper to review the settings of the wallpaper.
- On the Wallpaper page, verify that “show the wallpaper when no one is sharing their screen” is disabled (*Figure 7*).
- The ClickShare Base Unit will now go to standby when no content is being shared on the screen.



Figure 10: The Configurator login page

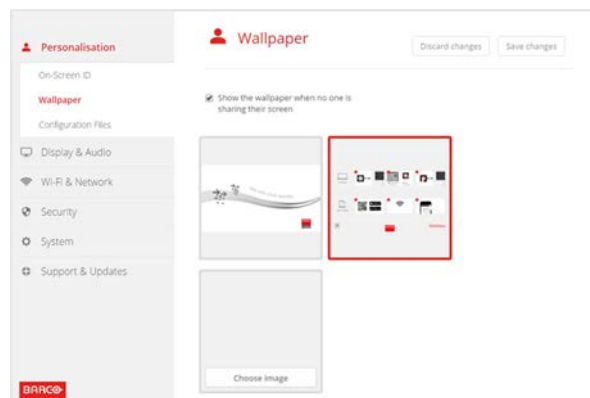


Figure 11: The Wallpaper settings page

Additional recommendation

Sometimes you will want to see the wallpaper, e.g. in order to identify which ClickShare Wi-Fi network to connect to with a ClickShare app from a mobile device. This can be done by pushing the power button on the front side of ClickShare Base Unit. The wallpaper will be shown for some time and then disappear again.

Since the ClickShare Base Unit supports both 1920x1200 and 1920x1080 resolution, when using a HDMI-to-USB converter, the ClickShare Base Unit will output a 1920x1200 resolution when in automatic resolution discovery. Since most displays have a resolution of 1920x1080, it is best to fix the ClickShare Base Unit output resolution to 1920x1080.

Integration with Cisco Systems

Cisco video conferencing endpoints allow you to tap into the Cisco experience for your meeting room. For a better experience inside your Cisco video conferencing rooms, we advise to combine the Cisco equipment with the wireless collaboration capabilities of ClickShare. This allows you to leverage your preferred business video conferencing installation and share with a click on the Button. Following description was put in place in combination with a Cisco TelePresence SX10.

The ClickShare Base Unit can be connected to the Cisco equipment using a standard HDMI cable. Connect the ClickShare Base Unit HDMI output with the Cisco HDMI input. No other cables or connections are required. Without configuration, a manual action will still be required to show the content from the ClickShare Base Unit within the Cisco session.

This can be achieved by tapping “share” on the Cisco screen or through the remote and by selecting the ClickShare input source. Two simple steps will allow you to overcome the need for user interaction on the Cisco equipment when sharing content.

Enable Auto Screen Sharing on Cisco equipment

To facilitate the automatic presentation of content on the screen a setting called “PresentationSelection” is available in the settings panel. This feature will present the content within the Cisco conference whenever a signal is detected on the HDMI input. To configure your Cisco equipment to share content automatically when someone inserts the Button, follow these steps:

- Go to the Cisco equipment and login with the admin account.
- In the Set-up tab, select Configuration.
- In the menu on the left, go to Video.
 - There, usually Connector will be used for the camera and Connector 2 for the HDMI input.
- For the connector on which you connected the ClickShare Base Unit, enter following settings:
 - InputSourceType: “PC”
 - Name: the meeting room name
 - OptimalDefinition Profile: High
 - PresentationSelection: “AutoShare”
 - Quality: “Sharpness” (select motion if you plan on sharing video most of the time)
 - RGBQuantizationRange: “Auto”
 - Visibility: “IfSignal”
- Click on “Save”

Connector 2

| | | |
|---------------------------|-----------------------|----------------------|
| InputSourceType | PC | ▼ |
| Name | ClickShare MR Iceland | (0 to 50 characters) |
| OptimalDefinition Profile | High | ▼ |
| PresentationSelection | AutoShare | ▼ |
| Quality | Sharpness | ▼ |
| RGBQuantizationRange | Auto | ▼ |
| Visibility | IfSignal | ▼ |

Figure 12: The Configuration screen

Enable Auto Standby when no content is shared on the ClickShare

When configured as above, the Cisco equipment will always present the content within the Cisco session whenever the ClickShare Base Unit is powered on, independent whether any content is being shared with the ClickShare Button (or ClickShare App).

As such, when no content is shared, this will result in the ClickShare wallpaper being shared within your current video conferencing session and a minimized video camera stream being present at the bottom of the screen. To maximize the video camera stream when no content is shared, follow these steps:

- Connect to the Base Unit, via Wi-Fi or an Ethernet connection, browse to the CS Configurator Web interface and log in (Figure 13).
- On the left, click on the Personalization entry, then click on Wallpaper to review the settings of the wallpaper.
- On the Wallpaper page, verify that “show the wallpaper when no one is sharing their screen” is disabled (Figure 14).
- The ClickShare Base Unit will now go to standby when no content is being shared on the screen.



Figure 133: The Configurator login page

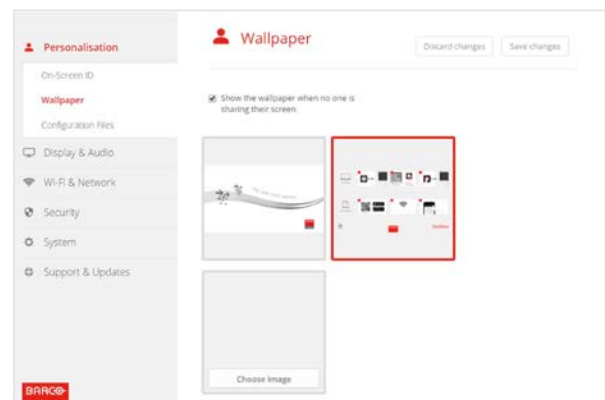


Figure 14: The wallpaper settings page

Disclaimer

All product and company names are trademarks™ or registered® trademarks of their respective holders. Use of them does not imply any affiliation with or endorsement by them. Barco provides this ClickShare AV Integration Guide without any liability or obligation of or on behalf of Barco. The sole purpose of this document is to provide information and examples for an optimal and integrated meeting room experience.

Deciding on and integrating the ClickShare Base Unit with other AV, Conferencing and UC equipment within the meeting room requires the involvement of your AV, Facilities and possibly your IT department, especially the persons responsible for the configuration of the meeting room.