

Supported Touch Panels

CSE-200, CSE-200+, CSE-800

Part numbers:

R9861520EU, R9861520NA, R9861520CN
R9861521EU, R9861521NA, R9861521CN, R9861521RW
R9861580EU, R9861580NA, R9861580CN

1. Introduction

The CSE-200 offers the ClickShare experience for small and medium-sized meeting rooms. Anyone – including guests – can connect with one click and share right away, without the need for any training. Users simply plug a USB-powered device – the ClickShare Button – into their PC or Mac and click the button to get the content from their laptop on the large meeting room screen. With the ClickShare App, users can also share content from their mobile phones or tablets.

The CSE-200+ brings enriched, interactive collaborative experiences for medium-sized meeting rooms. It allows up to 2 persons to share content simultaneously, from laptop or mobile device with the ClickShare Button or App. You can seamlessly integrate in your company network, enjoy the ease-of-mind of central management and boost collaboration and brainstorming in your enterprise.

The ClickShare CSE-800 is a wireless presentation solution designed for the boardroom and large meeting room. Up to 64 users can present anywhere, anytime, with full integration for legacy equipment. Touchback, black-boarding and annotation functions empower interactive teamwork, while four ClickShare buttons enable multiple users to share on screen simultaneously.

Set up quickly and easily, with no software, no training and no cables. Only minimal IT support is required, slashing trouble tickets and delivering a strong ROI. Keep your data safe behind the firewall, with secure network integration providing the freedom to share your work with confidence.

2. List of supported touch screen panels

The following list is a non-exhaustive list of touch panels and touch controllers, tested on and supported by the ClickShare CSE-200, CSE-200+ and CSE-800. Please verify whether the touch panel connected is listed below. In case the touch panel manufacturer is not mentioned by name, please verify whether the panel is using a supported controller listed below. Some touch panels, denoted with an asterisk (*) require a setup process described within this document to allow interoperability with the ClickShare CSE-200, CSE-200+ and CSE-800.

Note: Active pens are not supported at this moment.

- 3M PCT touch screens (e.g. Iiyama T2435MSC)
- ActionStar dual touch panels
- Atmel panels
- Cando dual touch panels
- Chunghwa panels
- CVTouch panels
- Cypress TrueTouch panels
- eGalax dual-touch panels
- Elan Microelectronics touch panels
- Elo TouchSystems IntelliTouch Plus panels
- GeneralTouch 'Sensing Win7-TwoFinger' panels
- GoodTouch panels
- Hanvon dual touch panels
- Iiyama touch panels
- Iitek dual touch panels
- IrTouch Infrared USB panels
- LG Display panels (Dell ST2220Tc)
- Baanto ShadowSense™ touch technology panels
- Lumio CrystalTouch panels
- MosArt dual-touch panels
- Newline X7 touch panels
- Panasonic multitouch panels
- PenMount dual touch panels
- Perixx Peripad 701 touchpad
- PixArt optical touch screen
- Pixcir dual touch panels
- Quanta panels
- Samsung panels with touch overlay*
- Sharp touch panels
- SiS multitouch panels
- Stantum multitouch panels
- Touch International Panels
- TSI touch panels*
- Unitec Panels
- Wistron optical touch panels
- XAT optical touch panels

- Xiroku optical touch panels
- Microsoft Surface Hub
- Zytronic touch panels
- Flatfrog InGlass Technology (LG 23ET63V-W, SMART SBID-7075P, DELL C5518Qt)
- CTOUCH (CLAP-65UHA5)

2.1. TSI touch-overlay and Samsung panels with PulseIR setup and configuration

When the touch options, annotation and blackboarding are not appearing when you tap the screen with 2 fingers when the touch screen is attached to the CSE-800 or the Touchback functionality is not working when the touch screen is attached to a CSE-200, CSE-200+ or CSE-800, follow the steps below.

1. Download IDS Pulse from the support page of www.tsitouch.com. Depending on your system you will need to select the appropriate version for macOS or Windows. The ZIP file will be saved to your downloads folder. Unzip the file to a location of your choice for easy retrieval.
2. Connect the TSI touch-overlay via the USB cable to the laptop.
3. Open "PulseIRController.exe" from the downloaded folder– screen shot below of the interface.
4. Within the list of devices, the TSI touch-overlay will come up with the overlay name and show you its parameter settings, below this list you can make the changes to parameter settings.
 - a. Chang "touch mode" from "Auto" to "Stylus".
 - b. Click the "apply" then "close" buttons.
5. Reconnect USB cable of the TSI touch-overlay to the CSE-200, CSE-200+ or CSE-800 and test to confirm changes worked.

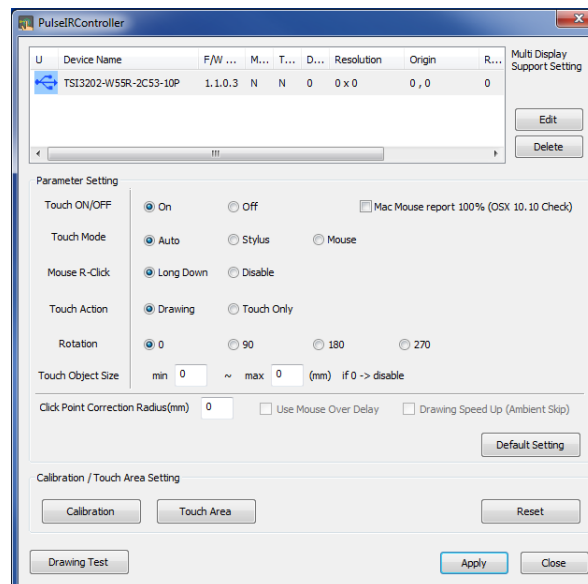


Figure 1: The PulseIRController application from TSI

3. What if my touch screen is not listed

The touch drivers used by our ClickShare Base Unit are generic, and therefore there is a high probability that your touch screen will work as expected. In most cases your touch display will work just fine. To avoid any purchase risk, please contact Barco Service Desk with all information with respect to the screen (Brand, type, model...) so we can arrange for an investigation or even an on-site tryout.